

# MITSUBISHI MARINE ENGINE

# S16R2

## **IMO2 Certified**

-Engine International Air Pollution Prevention (EIAPP) Certificates are available.

## **Upgrading from S16R**

-Longer stroke realize much higher output power and fuel efficiency.

## **Mechanical Injection System**

-No need to use complicated electronics.

## **Compact Design**

-Compactness gives advantages for installation and running cost.

## **High Reliability**

-Mitsubishi original fuel injection pump and turbo-charger bring best combustion matching.

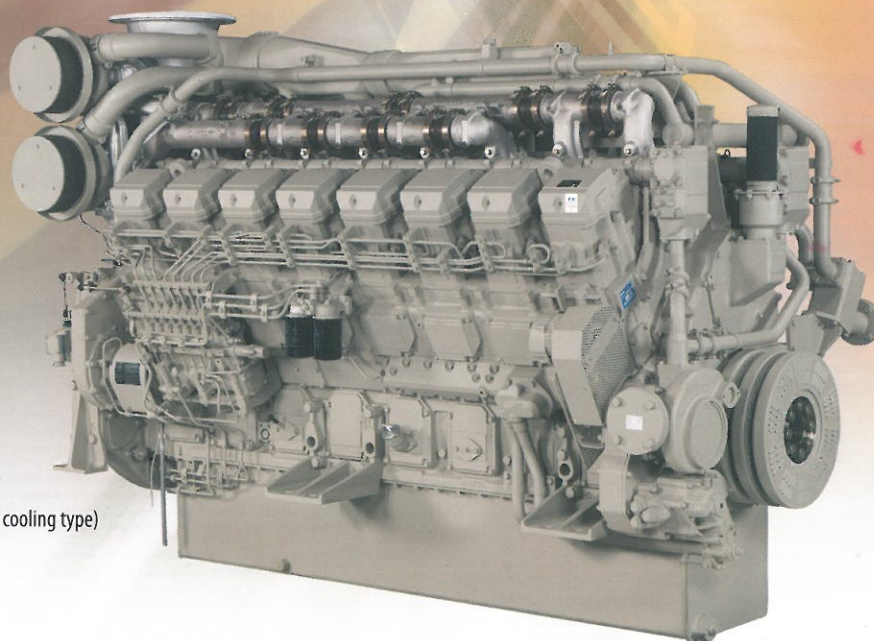
## **Easy Maintenance**

-Cylinder-heads are individually divided by cylinder.

-Large access doors on crankcase.

**NEW**

**IMO  
Tier 2**



(For fresh water cooling type)



Our Technologies, Your Tomorrow



# MITSUBISHI MARINE ENGINE S16R2

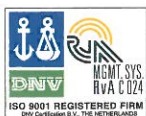
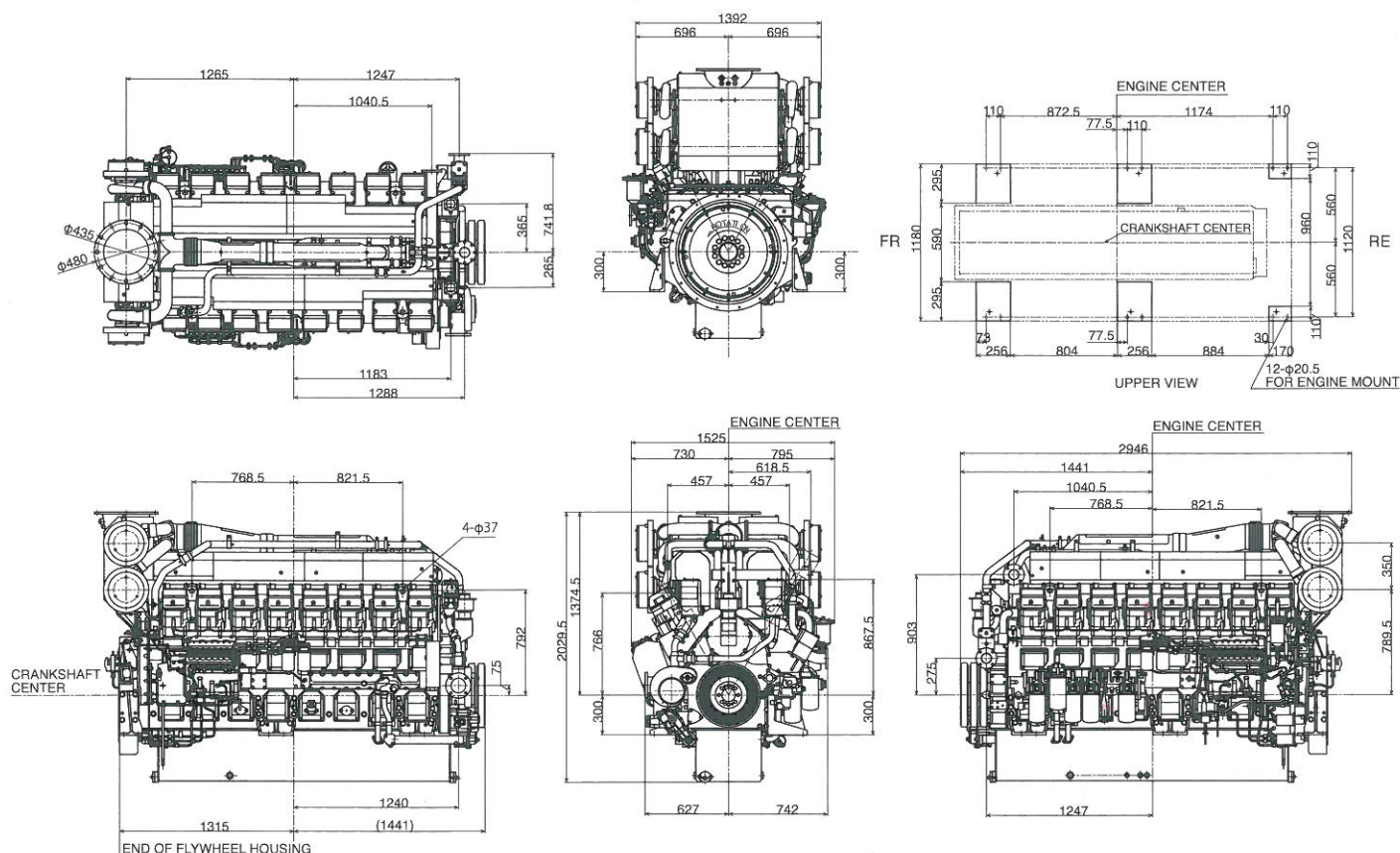
## Engine Specification

Model		S16R2-T2MPTAW	S16R2-T2MPTK
Type		4 stroke diesel, water-cooled, turbocharged diesel engine	
Cooling system		Intermediate freshwater cooling	Direct seawater cooling
Combustion type		Direct injection	
Cylinder numbers		V-16	
Piston bore × stroke	mm	170 × 220	
Total displacement	liter	79.9	
Rating (Propulsion)*		1885/1500 kW/rpm, 1600/1400 kW/rpm, 1450/1350 kW/rpm	
Rating (Auxiliary)*		1960/1500 kW/rpm (50Hz) , 1590/1200 kW/rpm (60Hz)	
Fuel oil		Diesel fuel (ISO 8217DMX)	
Engine starting		Electrical start	
Lubricating system		Forced lubrication (Pressure feed by oil pump)	
Lubricating oil		Class CD or CF (API service classification)	
Turbocharger		MHI Original	
Rotation direction (Engine)		Counter-clockwise as viewed from clutch side	
Flywheel housing dimensions		SAE No. 00	
Flywheel dimensions		SAE No. 21	
L × W × H	mm	2946 × 1525 × 2029	
Dry weight	kg	7750	

\*Rating (Propulsion and Auxiliary) should be subject to the actual operation conditions and the cooling system.  
For details, please contact the official distributor of MITSUBISHI MARINE ENGINE in your area.

## Dimensions (for intermediate freshwater cooling)

Unit: mm



- \* Information contained in this catalogue is as of Oct. 2012.
- \* Specifications and equipment of product, and its appearance may be changed without prior notice.
- \* The picture used in this catalog may partially differ with standard equipment of product.
- \* Please thoroughly check the maintenance manual and installation manual before use, and appropriately use engine.

In case of application, please contact the below:



**XIN MING HUA PTE LTD**  
**XMH ENGINEERING PTE LTD**  
No. 44 Sungei Kadut Avenue  
Singapore 729667

Tel : (65) 6368 0188  
Fax : (65) 6368 0633  
Email : sales@engine.com.sg  
Website : www.xmh.com.sg



YOUR CONNECTION  
TO THE RIGHT MACHINE

TG42-2S16R2E1-B-0, (1.0)12-10, R

Printed in Japan